

## Speakers



**Kevin Cohen** (MSEE '92 and PhDEE '95 under Professor Webster)—*Advanced*

*Capabilities and Systems Group Leader, MIT Lincoln Laboratory*



**Peter Ping Hua** (MSEE '84 and PhDEE '90 under Professor Webster)—*Managing*

*Partner, SB China Venture Capital*



**Yongmin Kim** (MSEE '79 and PhDEE '82 under Professor Tompkins)—*President of*

*Pohang University of Science and Technology (POSTEC)*



**Shen Luo** (PhDEE '94 under Professor Tompkins)—*Deputy General Manager,*

*Patient Monitoring & Life Support Business Unit, Shenzhen Mindray Biomedical Electronics Co. LTD.*



**Dorin Panescu** (MSEE '91 and PhDEE '93 under Professor Webster)—*Senior Director,*

*Product Development, Intuitive Surgical*



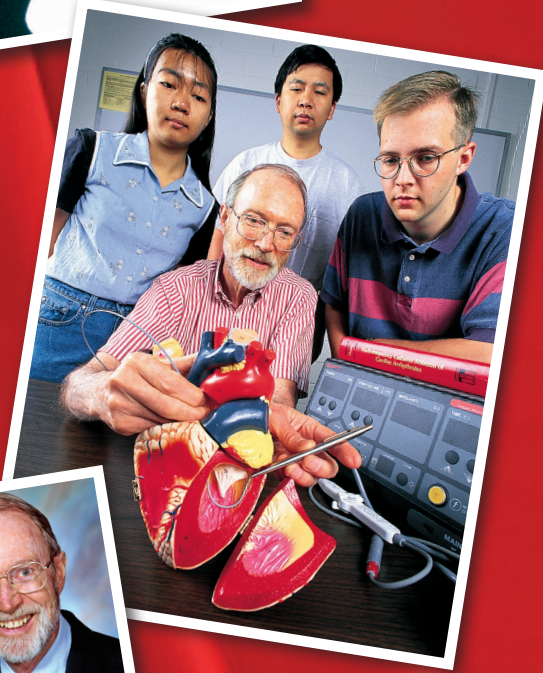
**Alan V. Sahakian** (MSEE '79 and PhDEE '84 under Professors Tompkins and Webster)—*Professor and Chair of EECS,*

*Professor of BME, Northwestern*



**Nitish V. Thakor** (MSBME '78 and PhDEE '81 under Professor Webster)—

*Professor of Biomedical Engineering, Johns Hopkins University*



DEPARTMENT OF  
**Biomedical Engineering**  
UNIVERSITY OF WISCONSIN-MADISON



**Celebrating  
a global legacy  
of two exceptional  
and inspiring  
educators.**

A symposium honoring  
the unique contributions and  
legacies of BME Professors  
Willis Tompkins  
and John Webster.

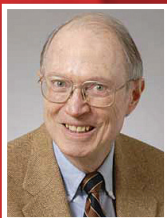
**April 5, 2014**







Willis Tompkins



John Webster

Professors Willis Tompkins and John Webster have worked together in a complementary fashion to build biomedical instrumentation from a fledgling field to its place today as a cornerstone of worldwide education and research programs in biomedical engineering. They have mentored some of the leading figures in the field today, including several who will speak at this symposium. Their knack for practically demonstrating how engineering principles can advance clinical medicine has impacted clinics, hospitals, universities, and companies around the globe. Both have been central figures in the advent and growth of the BME department at UW-Madison and its signature program in experiential design education.

John has written or served as editor of 23 textbooks. His textbook, *Medical Instrumentation: Application and Design*, now in the fourth edition, has been the primary teaching resource for two generations of biomedical engineers, including many of the current UW-Madison BME faculty. He served as director of the UW-Madison BME master's degree program from 1976-1980.

Willis has published four textbooks in biomedical instrumentation—three of them with Webster. He was the primary academic advisor for the first decade of BME undergraduate students from the inception of the BME department at UW-Madison in 1999. Previously, he also served for five years as the chair of the UW-Madison Department of Electrical and Computer Engineering.

Both have contributed extensively to the research literature in biomedical engineering and have served as research mentors for countless graduate students over their careers.

Willis and John are inaugural fellows of the Biomedical Engineering Society and life fellows of IEEE (Institute for Electrical and Electronic Engineers). Both also have received the IEEE Engineering in Medicine and Biology Society Career Achievement Award. Willis also is a founding fellow of the American Institute for Medical and Biological Engineering and is a past president of the Engineering in Medicine and Biology Society.

## Program

AM 8:30	Check in / Continental breakfast	ECB Atrium
9:00	Welcome: Dean Ian Robertson	Tong Auditorium (ECB 1003)
9:15	<b>It takes two to Tango: Dr. Analog vs. Dr. Digital—</b> Nitish Thakor, <i>Johns Hopkins</i>	Tong Auditorium (ECB 1003)
9:45	<b>Six years of graduate education at Wisconsin and its impact over the last 32 years —</b> Yongmin Kim, <i>Pohang University of Science &amp; Technology (POSTEC)</i>	Tong Auditorium (ECB 1003)
10:15	BREAK	ECB Atrium
10:30	<b>Non-contact patient monitoring, irreversible electroporation tumor ablation and other BME applications of ECE principles—</b> Alan Sahakian, <i>Northwestern</i>	Tong Auditorium (ECB 1003)
11:00	<b>Venture capital investment in healthcare: Exploring the global impact of biomedical innovation—</b> Peter Ping Hua, <i>SB China Venture Capital</i>	Tong Auditorium (ECB 1003)
11:30	LUNCH	ECB Atrium
PM 12:30	Symposium group photo	ECB Atrium
12:45	<b>Four decades of innovation in medical systems development—</b> Dorin Panescu, <i>Intuitive Surgical</i>	Tong Auditorium (ECB 1003)
1:15	<b>A life in the world of heart disease—</b> Shen Luo, <i>Shenzhen Mindray Biomedical Electronics</i>	Tong Auditorium (ECB 1003)
1:45	BREAK	ECB Atrium
2:00	<b>Enhanced regional situational awareness—</b> Kevin Cohen, <i>MIT</i>	Tong Auditorium (ECB 1003)
2:30	<b>Designing on the shoulders of two giants: From mentees to mentors and the global impact—</b> John Puccinelli and Amit Nimunkar, <i>BME Faculty Associates</i>	Tong Auditorium (ECB 1003)
3:00	Lab Tour: Design Instructional Space	Meet in ECB Atrium
3:15	Symposium discussion: <b>The future of bioinstrumentation education: Where do we go from here?</b>	Tong Auditorium (ECB 1003)
4:00	Conclusion	
5:30-9:30	Evening reception ( <i>Presentation at 7 PM</i> )	Blackhawk Country Club